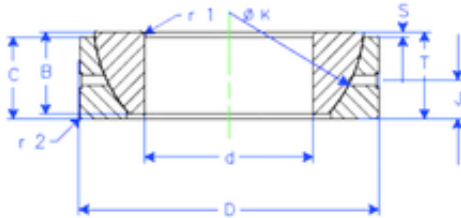




IJK BEARING COMPANY

120 mm x 180 mm x 38 mm Enduro GE 120 SX
plain bearings



GE 120 SX Bearing 2D drawings and 3D CAD models

Bearing No. GE 120 SX

Size	120x180x38 mm
Bore Diameter	120 mm
Outer Diameter	180 mm
Width	38 mm
d	120 mm
D	180 mm
T	38 mm
B	38 mm
C	37 mm
r1 min.	2 mm
r2 min.	2 mm
J	19 mm
K	168 mm
S	14,5 mm
Weight	3,969837184 Kg
Basic dynamic load rating (C)	547 kN