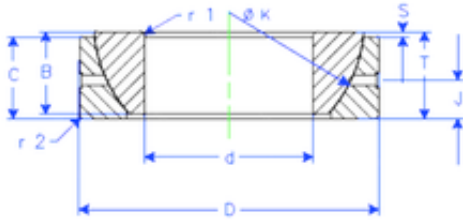




IJK BEARING COMPANY

32 mm x 58 mm x 17 mm Enduro GE 32 SX plain bearings



GE 32 SX Bearing 2D drawings and 3D CAD models

Bearing No. GE 32 SX

Size	32x58x17 mm
Bore Diameter	32 mm
Outer Diameter	58 mm
Width	17 mm
d	32 mm
D	58 mm
T	17 mm
B	17 mm
C	16 mm
r1 min.	1 mm
r2 min.	1 mm
J	8,5 mm
K	52 mm
S	2 mm
Weight	0,240857352 Kg
Basic dynamic load rating (C)	71 kN