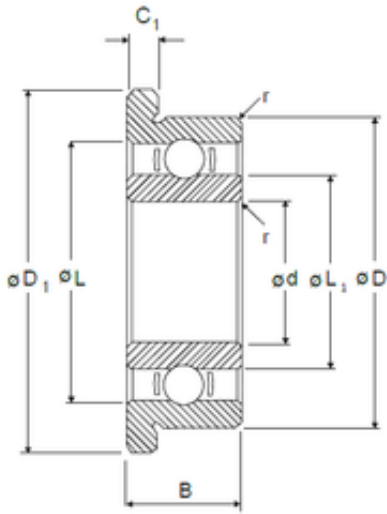




# IJK BEARING COMPANY



2,38 mm x 4,762 mm x 1,588 mm NMB  
RIF-3332 deep groove ball bearings

Bearing No. RIF-3332

Size	2.38x4.762x1.588 mm
Bore Diameter	2,38 mm
Outer Diameter	4,762 mm
Width	1,588 mm
d	2,38 mm
D	4,762 mm
B	1,588 mm
C	1,588 mm
r min.	0,08 mm
C1	0,46 mm
D1	5,94 mm
L	0,163 mm
L1	0,118 mm
Basic dynamic load rating (C)	0,187 kN

RIF-3332 Bearing 2D drawings and 3D CAD models