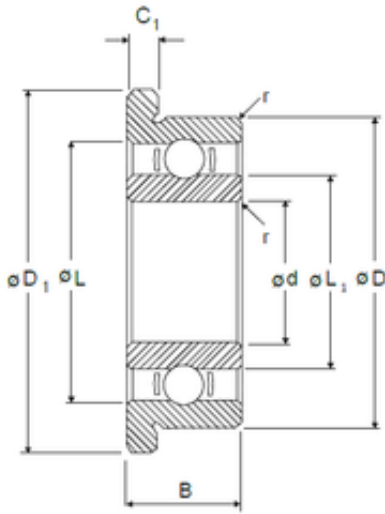




IJK BEARING COMPANY



2,5 mm x 7 mm x 2,5 mm NMB RF-725 deep groove ball bearings

Bearing No. RF-725

Size	2.5x7x2.5 mm
Bore Diameter	2,5 mm
Outer Diameter	7 mm
Width	2,5 mm
d	2,5 mm
D	7 mm
B	2,5 mm
C	2,5 mm
r min.	0,15 mm
C1	0,7 mm
D1	8,5 mm
L	5,52 mm
L1	3,8 mm
Basic dynamic load rating (C)	0,38 kN

RF-725 Bearing 2D drawings and 3D CAD models