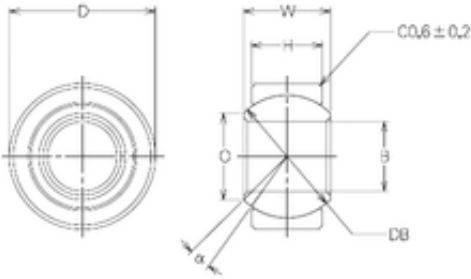




IJK BEARING COMPANY

16 mm x 30 mm x 16 mm NMB MBW16CR plain bearings



Bearing No. MBW16CR

Size	16x30x19 mm
Bore Diameter	16 mm
Outer Diameter	30 mm
Width	19 mm
d	16 mm
D	30 mm
B	19 mm
C	15 mm
Db	26,988 mm
O	19,2 mm
B	16 mm
D	30 mm
H	15 mm
W	19 mm
Angle	10 °
Weight	0,065 Kg
Static load rating radial (C0)	207,9 kN

MBW16CR Bearing 2D drawings and 3D CAD models